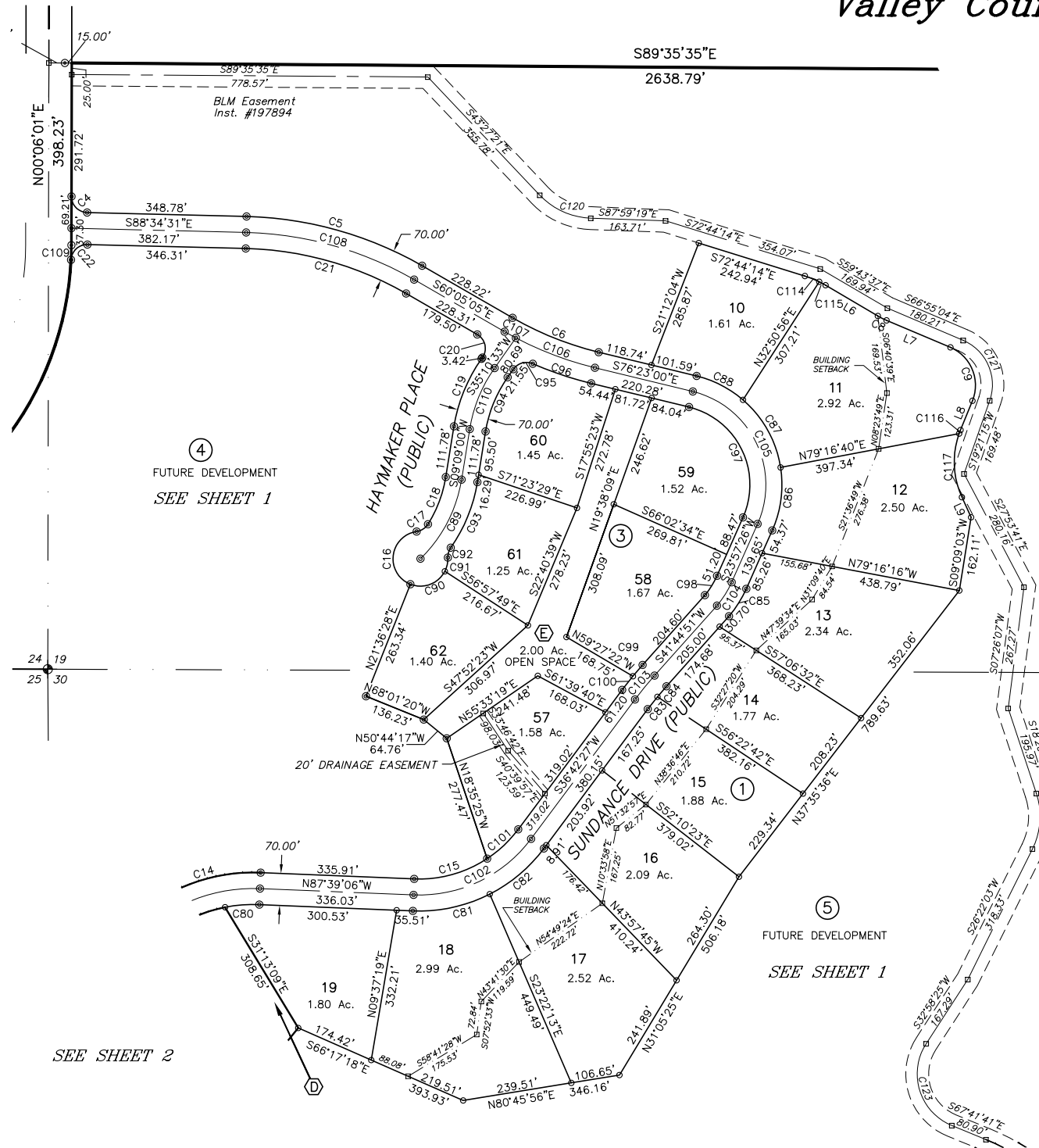


WHITE CLOUD SUBDIVISION PHASE 1

Located in
the SE 1/4 Sec. 24, NE 1/4 Sec. 25 T.18N., R.2E., and
the SW 1/4 Sec. 19, NW 1/4 Sec. 30 T.18N., R.3E., B.M.
Valley County, Idaho

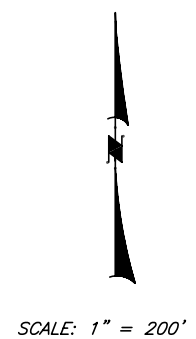


LEGEND

- SUBDIVISION BOUNDARY
- ⊕ FOUND BRASS CAP MONUMENT
- ⊕ FOUND ALUMINUM CAP MONUMENT
- ⊙ FOUND 5/8" IRON PIN
- ⊙ SET 5/8" X 30" REBAR MKD LS 8577
- FOUND 1/2" IRON PIN
- SET 1/2" X 24" REBAR MKD LS 8577
- ANGLE POINT - NOTHING SET
- EASEMENT LINE
- ④ BLOCK NUMBER
- Ⓐ OPEN SPACE PARCEL

CURVE TABLE						
CURVE	RADIUS	LENGTH	TANGENT	DELTA	BEARING	CHORD
C4	35.00	54.17	34.20	88°40'32"	S44°14'15"E	48.92
C5	810.00	402.78	205.64	28°29'26"	N74°19'48"W	398.64
C6	715.00	203.44	102.41	16°18'08"	S68°13'56"E	202.75
C8	160.00	21.22	10.63	7°35'58"	S63°18'30"E	21.21
C9	90.00	139.95	88.59	89°05'46"	N22°22'11"W	126.27
C14	390.00	235.39	121.41	34°34'56"	S75°03'26"W	231.84
C15	270.00	168.45	87.07	35°44'47"	N74°29'16"E	165.73
C16	60.00	157.50	227.08	150°23'56"	S06°48'25"W	116.02
C17	35.00	30.38	16.22	49°43'50"	N57°08'28"E	29.43
C18	275.00	111.00	56.26	23°07'33"	N20°42'46"E	110.24
C19	355.00	161.25	82.04	26°01'34"	S22°09'46"W	159.87
C20	35.00	58.19	38.37	95°15'38"	N12°27'16"W	51.72
C21	740.00	367.97	187.87	28°29'26"	N74°19'48"W	364.19
C22	35.00	54.19	34.22	88°42'40"	S47°04'09"W	48.94
C80	320.00	75.31	37.83	13°29'06"	S85°36'21"W	75.14
C81	340.00	173.93	88.91	29°18'36"	N77°40'56"E	172.04
C82	340.00	156.18	79.49	26°19'11"	N49°52'03"E	154.81
C83	765.00	34.10	17.05	2°33'14"	S38°11'55"W	34.10
C84	765.00	30.34	15.17	2°16'20"	S40°36'42"W	30.33
C85	245.00	71.05	35.77	16°36'55"	N32°15'53"E	70.80
C86	245.00	140.82	72.41	32°55'53"	N07°33'37"E	138.89
C87	245.00	172.58	90.05	40°21'38"	N29°05'09"W	169.04
C88	245.00	115.11	58.64	26°55'13"	N62°43'35"W	114.06
C89	310.00	198.29	102.67	36°38'54"	N27°28'27"E	194.92
C90	60.00	88.23	54.26	84°15'02"	N69°28'56"E	80.49
C91	60.00	31.14	15.93	29°44'15"	N12°29'18"E	30.79
C92	35.00	22.87	11.86	37°26'29"	S16°20'25"W	22.47
C93	345.00	156.02	79.37	25°54'40"	N22°06'19"E	154.69
C94	285.00	129.46	65.87	26°01'34"	S22°09'46"W	128.35
C95	35.00	47.82	28.48	78°16'33"	S74°18'50"W	44.18
C96	785.00	134.75	67.54	9°50'06"	S71°27'57"E	134.58
C97	175.00	306.01	209.26	100°11'20"	N26°03'21"W	268.49
C98	175.00	50.09	25.22	16°24'00"	N32°09'26"E	49.92
C99	835.00	32.52	16.26	2°13'53"	S40°37'55"W	32.52
C100	835.00	37.95	18.98	2°36'14"	S38°12'52"W	37.95
C101	270.00	93.81	47.38	19°54'25"	N46°39'40"E	93.34
C102	305.00	296.13	160.91	55°37'45"	N64°31'20"E	284.63
C103	800.00	67.45	33.75	4°49'51"	S39°19'56"W	67.43
C104	210.00	60.55	30.49	16°31'16"	N32°13'04"E	60.34
C105	210.00	367.26	251.17	100°12'07"	N26°04'10"W	322.21
C106	750.00	185.31	93.13	14°09'25"	S69°18'17"E	184.84
C107	750.00	27.99	14.00	2°08'17"	S61°09'26"E	27.99
C108	775.00	385.37	196.76	28°29'26"	N74°19'48"W	381.41
C109	700.00	31.93	15.97	2°36'47"	N01°24'25"E	31.92
C114	215.00	33.81	16.94	9°00'40"	N68°13'54"W	33.78
C115	215.00	15.83	7.92	4°13'03"	N61°37'03"W	15.82
C116	185.00	8.35	4.17	2°35'06"	S20°53'09"W	8.35
C117	185.00	142.64	75.08	44°10'40"	S02°29'44"E	139.14
C120	161.40	125.45	66.08	44°31'58"	S65°43'20"E	122.31
C121	105.30	158.55	98.66	86°16'19"	N23°46'54"W	143.99
C122	160.00	124.84	65.79	44°42'21"	N04°00'53"E	121.70
C123	121.80	214.00	146.89	100°40'06"	S17°21'38"E	187.52

LINE TABLE		
LINE	LENGTH	BEARING
L6	132.67	S59°30'31"E
L7	151.69	N67°06'29"W
L8	69.06	S22°10'42"W
L9	48.30	S24°35'04"E



SEE SHEET 2

SEE SHEET 1