

Aspen Ridge #2

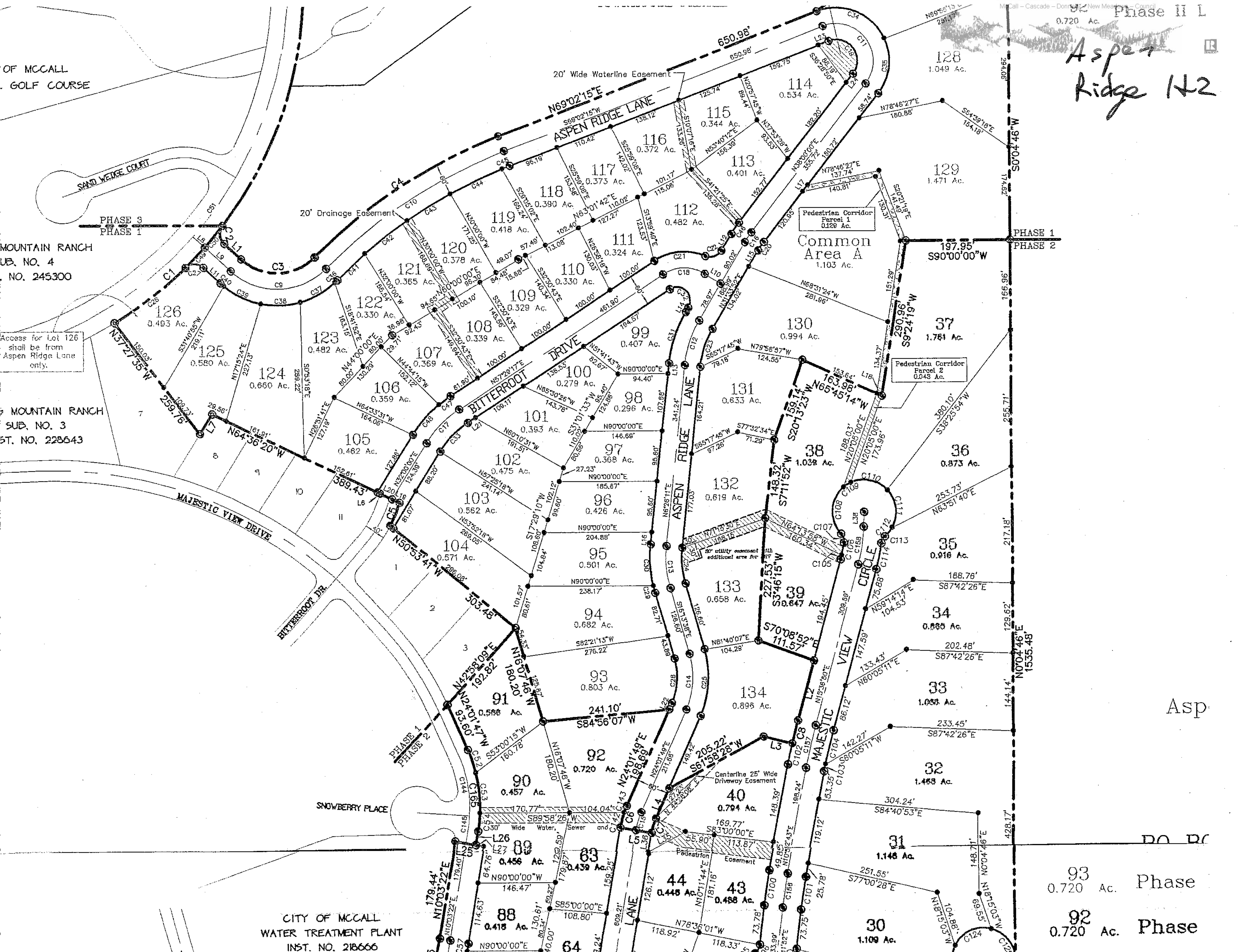
OF MCCALL  
GOLF COURSE

MOUNTAIN RANCH  
SUB. NO. 4  
ST. NO. 245300

Access for Lot 126  
shall be from  
Aspen Ridge Lane  
only.

MOUNTAIN RANCH  
SUB. NO. 3  
ST. NO. 228643

CITY OF MCCALL  
WATER TREATMENT PLANT  
INST. NO. 218666



93  
0.720 Ac. Phase

92  
0.720 Ac. Phase

Asp

DO R

Common Area A  
1.103 Ac.

Pedestrian Corridor  
Parcel 2  
0.043 Ac.

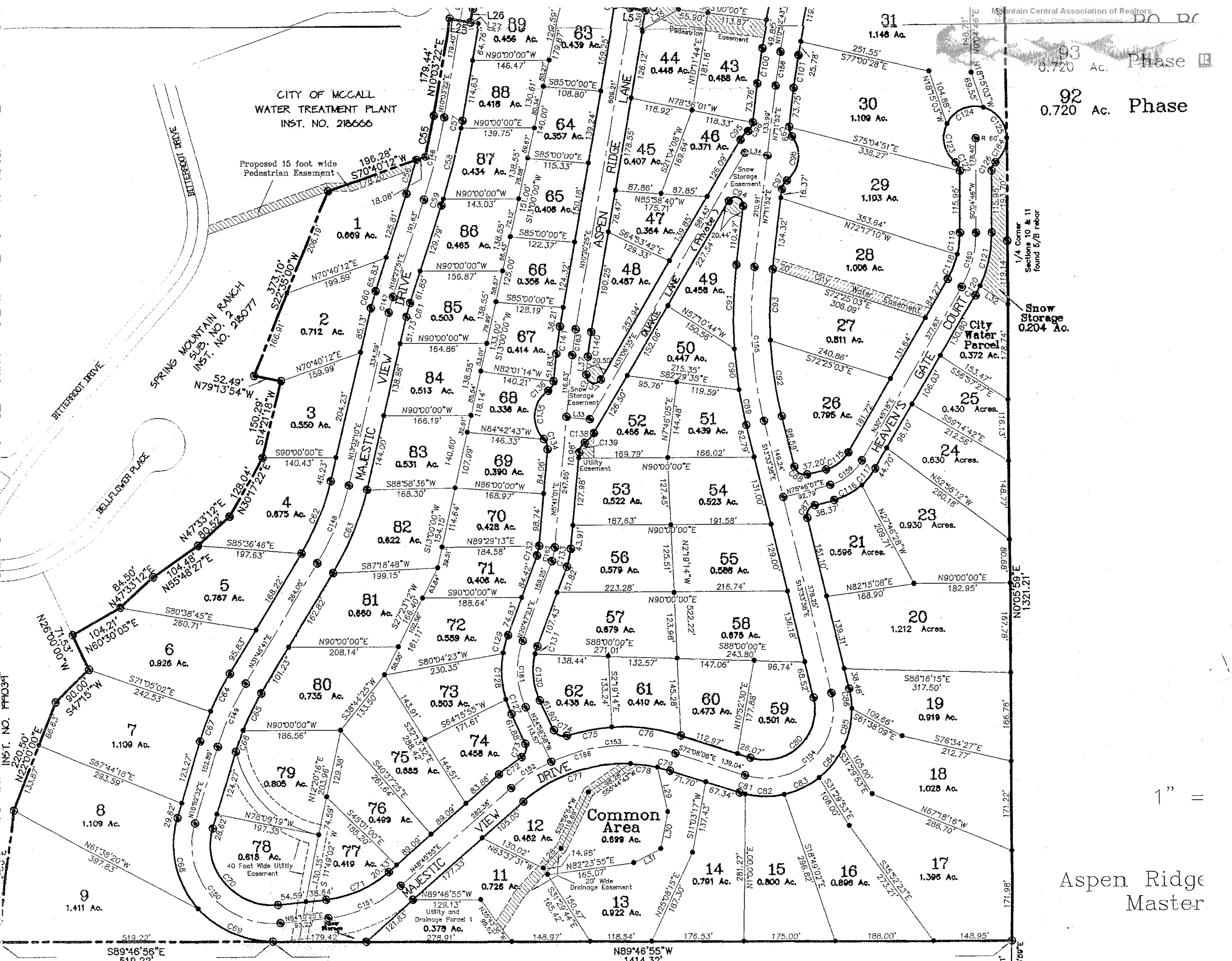
Pedestrian Corridor  
Parcel 1  
0.128 Ac.

Centerline 25' Wide  
Driveway Easement

20' Wide Waterline Easement

20' Drainage Easement

30' utility easement  
additional area for



CITY OF McCALL  
WATER TREATMENT PLANT  
INST. NO. 218666

Proposed 15 foot wide  
Pedestrian Easement

SPRING MOUNTAIN RANCH  
SUB. NO. 2  
INST. NO. 218077

1/4 Corner  
Sections 10 & 11  
found 5/8 rebar

Snow Storage  
0.204 Ac.

City Water  
Parcel  
0.572 Ac.

93  
0.720 Ac. Phase R

92  
0.720 Ac. Phase

1" =

Aspen Ridge  
Master