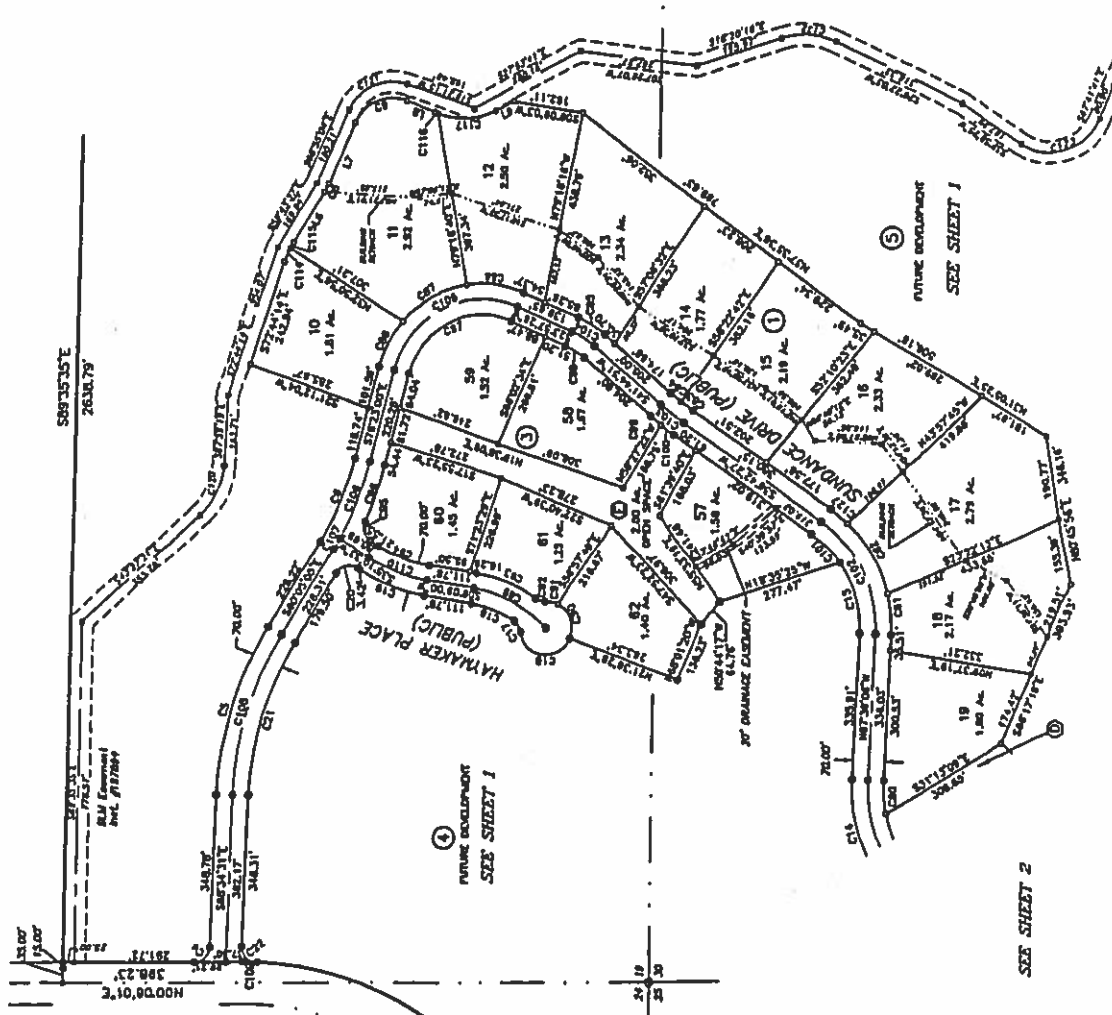


# WHITE CLOUD PHASE 1

a Subdivision Located in  
 the SE 1/4 Sec. 24, NE 1/4 Sec. 25 T.18N., R.2E., and  
 the SW 1/4 Sec. 19, NW 1/4 Sec. 30 T.18N., R.3E., B.M.  
 Valley County, Idaho



- LEGEND**
- SUBDIVISION BOUNDARY
  - ⊕ FOUND BRASS CAP MONUMENT
  - ⊙ FOUND ALUMINUM CAP MONUMENT
  - FOUND 5/8" IRON PIN
  - SET 5/8" X 30" REBAR AND LS 8577
  - FOUND 1/2" IRON PIN
  - SET 1/2" X 34" REBAR AND LS 8577
  - ANGLE POINT - NOTHING SET
  - == EASEMENT LINE
  - ① BLOCK NUMBER
  - ② OPEN SPACE PARCEL

CURVE	RADIUS	LENGTH	TANGENT	DELTA	BEARING	CHORD
C1	34.00	54.17	34.00	84.97	S 271.13° E	48.87
C2	34.00	54.17	34.00	84.97	N 71.13° W	48.87
C3	34.00	54.17	34.00	84.97	S 84.97° W	48.87
C4	34.00	54.17	34.00	84.97	N 11.13° E	48.87
C5	34.00	54.17	34.00	84.97	S 11.13° E	48.87
C6	34.00	54.17	34.00	84.97	N 71.13° W	48.87
C7	34.00	54.17	34.00	84.97	S 271.13° E	48.87
C8	34.00	54.17	34.00	84.97	N 71.13° W	48.87
C9	34.00	54.17	34.00	84.97	S 84.97° W	48.87
C10	34.00	54.17	34.00	84.97	N 11.13° E	48.87
C11	34.00	54.17	34.00	84.97	S 11.13° E	48.87
C12	34.00	54.17	34.00	84.97	N 71.13° W	48.87
C13	34.00	54.17	34.00	84.97	S 271.13° E	48.87
C14	34.00	54.17	34.00	84.97	N 71.13° W	48.87
C15	34.00	54.17	34.00	84.97	S 84.97° W	48.87
C16	34.00	54.17	34.00	84.97	N 11.13° E	48.87
C17	34.00	54.17	34.00	84.97	S 11.13° E	48.87
C18	34.00	54.17	34.00	84.97	N 71.13° W	48.87
C19	34.00	54.17	34.00	84.97	S 271.13° E	48.87
C20	34.00	54.17	34.00	84.97	N 71.13° W	48.87
C21	34.00	54.17	34.00	84.97	S 84.97° W	48.87
C22	34.00	54.17	34.00	84.97	N 11.13° E	48.87
C23	34.00	54.17	34.00	84.97	S 11.13° E	48.87
C24	34.00	54.17	34.00	84.97	N 71.13° W	48.87
C25	34.00	54.17	34.00	84.97	S 271.13° E	48.87
C26	34.00	54.17	34.00	84.97	N 71.13° W	48.87
C27	34.00	54.17	34.00	84.97	S 84.97° W	48.87
C28	34.00	54.17	34.00	84.97	N 11.13° E	48.87
C29	34.00	54.17	34.00	84.97	S 11.13° E	48.87
C30	34.00	54.17	34.00	84.97	N 71.13° W	48.87
C31	34.00	54.17	34.00	84.97	S 271.13° E	48.87
C32	34.00	54.17	34.00	84.97	N 71.13° W	48.87
C33	34.00	54.17	34.00	84.97	S 84.97° W	48.87
C34	34.00	54.17	34.00	84.97	N 11.13° E	48.87
C35	34.00	54.17	34.00	84.97	S 11.13° E	48.87
C36	34.00	54.17	34.00	84.97	N 71.13° W	48.87
C37	34.00	54.17	34.00	84.97	S 271.13° E	48.87
C38	34.00	54.17	34.00	84.97	N 71.13° W	48.87
C39	34.00	54.17	34.00	84.97	S 84.97° W	48.87
C40	34.00	54.17	34.00	84.97	N 11.13° E	48.87
C41	34.00	54.17	34.00	84.97	S 11.13° E	48.87
C42	34.00	54.17	34.00	84.97	N 71.13° W	48.87
C43	34.00	54.17	34.00	84.97	S 271.13° E	48.87
C44	34.00	54.17	34.00	84.97	N 71.13° W	48.87
C45	34.00	54.17	34.00	84.97	S 84.97° W	48.87
C46	34.00	54.17	34.00	84.97	N 11.13° E	48.87
C47	34.00	54.17	34.00	84.97	S 11.13° E	48.87
C48	34.00	54.17	34.00	84.97	N 71.13° W	48.87
C49	34.00	54.17	34.00	84.97	S 271.13° E	48.87
C50	34.00	54.17	34.00	84.97	N 71.13° W	48.87
C51	34.00	54.17	34.00	84.97	S 84.97° W	48.87
C52	34.00	54.17	34.00	84.97	N 11.13° E	48.87
C53	34.00	54.17	34.00	84.97	S 11.13° E	48.87
C54	34.00	54.17	34.00	84.97	N 71.13° W	48.87
C55	34.00	54.17	34.00	84.97	S 271.13° E	48.87
C56	34.00	54.17	34.00	84.97	N 71.13° W	48.87
C57	34.00	54.17	34.00	84.97	S 84.97° W	48.87
C58	34.00	54.17	34.00	84.97	N 11.13° E	48.87
C59	34.00	54.17	34.00	84.97	S 11.13° E	48.87
C60	34.00	54.17	34.00	84.97	N 71.13° W	48.87
C61	34.00	54.17	34.00	84.97	S 271.13° E	48.87
C62	34.00	54.17	34.00	84.97	N 71.13° W	48.87
C63	34.00	54.17	34.00	84.97	S 84.97° W	48.87
C64	34.00	54.17	34.00	84.97	N 11.13° E	48.87
C65	34.00	54.17	34.00	84.97	S 11.13° E	48.87
C66	34.00	54.17	34.00	84.97	N 71.13° W	48.87
C67	34.00	54.17	34.00	84.97	S 271.13° E	48.87
C68	34.00	54.17	34.00	84.97	N 71.13° W	48.87
C69	34.00	54.17	34.00	84.97	S 84.97° W	48.87
C70	34.00	54.17	34.00	84.97	N 11.13° E	48.87
C71	34.00	54.17	34.00	84.97	S 11.13° E	48.87
C72	34.00	54.17	34.00	84.97	N 71.13° W	48.87
C73	34.00	54.17	34.00	84.97	S 271.13° E	48.87
C74	34.00	54.17	34.00	84.97	N 71.13° W	48.87
C75	34.00	54.17	34.00	84.97	S 84.97° W	48.87
C76	34.00	54.17	34.00	84.97	N 11.13° E	48.87
C77	34.00	54.17	34.00	84.97	S 11.13° E	48.87
C78	34.00	54.17	34.00	84.97	N 71.13° W	48.87
C79	34.00	54.17	34.00	84.97	S 271.13° E	48.87
C80	34.00	54.17	34.00	84.97	N 71.13° W	48.87
C81	34.00	54.17	34.00	84.97	S 84.97° W	48.87
C82	34.00	54.17	34.00	84.97	N 11.13° E	48.87
C83	34.00	54.17	34.00	84.97	S 11.13° E	48.87
C84	34.00	54.17	34.00	84.97	N 71.13° W	48.87
C85	34.00	54.17	34.00	84.97	S 271.13° E	48.87
C86	34.00	54.17	34.00	84.97	N 71.13° W	48.87
C87	34.00	54.17	34.00	84.97	S 84.97° W	48.87
C88	34.00	54.17	34.00	84.97	N 11.13° E	48.87
C89	34.00	54.17	34.00	84.97	S 11.13° E	48.87
C90	34.00	54.17	34.00	84.97	N 71.13° W	48.87
C91	34.00	54.17	34.00	84.97	S 271.13° E	48.87
C92	34.00	54.17	34.00	84.97	N 71.13° W	48.87
C93	34.00	54.17	34.00	84.97	S 84.97° W	48.87
C94	34.00	54.17	34.00	84.97	N 11.13° E	48.87
C95	34.00	54.17	34.00	84.97	S 11.13° E	48.87
C96	34.00	54.17	34.00	84.97	N 71.13° W	48.87
C97	34.00	54.17	34.00	84.97	S 271.13° E	48.87
C98	34.00	54.17	34.00	84.97	N 71.13° W	48.87
C99	34.00	54.17	34.00	84.97	S 84.97° W	48.87
C100	34.00	54.17	34.00	84.97	N 11.13° E	48.87

LINE	LENGTH	BEARING
L1	152.67	S 87° 20' 11" E
L2	151.88	N 77° 08' 32" W
L3	49.98	S 74° 02' 32" E
L4	49.98	N 15° 57' 28" W